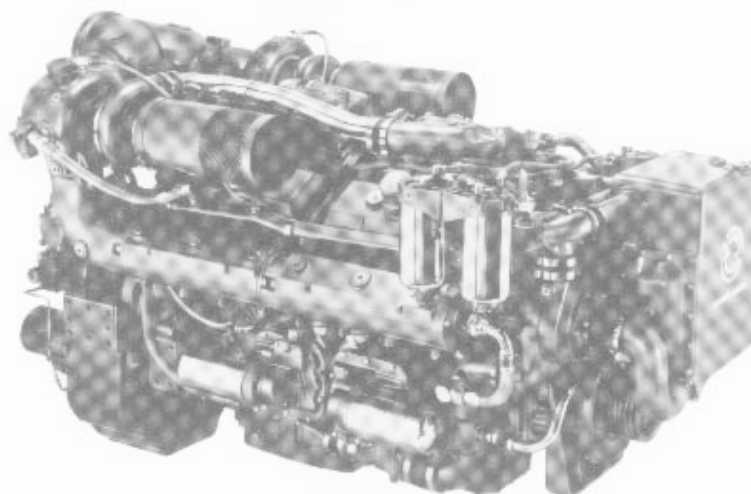


DETROIT DIESEL Series 92

Marine Model Pleasure Craft

12V-92TA 1080 BHP



General Specifications

Basic Engine	12V-92TA
Model	8122-7400
Description	Turbocharged-Aftercooled with Bypass Blower
Number of Cylinders	12
Bore and Stroke	4.84 in x 5.00 in (123 mm x 127 mm)
Displacement	1104 cu in (18.1 liters)
Compression Ratio	17.0 to 1
Weight (dry)	5861 lbs (2659 kg)

Rated Power Output—Maximum

Gross Power	1080 BHP (805 kW) @ 2300 RPM
Net Power	1040 SHP (775 kW) @ 2300 RPM

Equipment Specifications

Air Inlet Housing—With manual shutdown
Air Silencer—Two
Aftercooler—Two-pass with precooled coolant supply
Alternator—24 volt, 65 amp, flange mounted
Cooling System—Low profile heat exchanger with cast iron tank and raw water pump
Crankshaft Pulley—5 Grooves, .50 inch wide
Engine Mounts
Exhaust System—Fresh water-cooled manifolds and twin turbine housings
Factory Installed Marine Gear Options—ZF BW 195 (1.52, 2.03, 2.57:1 reduction ratios) or without gear for custom installed gear
Flywheel Housing—SAE #1
Fuel System—Cam operated unit injectors with low pressure USCG type A external hoses, fuel filters and cooler
Governor—Variable speed
Lube Oil Filter—Full flow, spin on
Marine Gear—Detroit Diesel-273 (1.64, 1.83, 2.03, 2.55 1.52, 2.03:1 reduction ratios)
Oil Pan—Cast iron, designed for 15° inclination angle, rear sump
Starting Motor—24 volt
Vibration Damper—Viscous torsional damper

Rating conditions: ISO 3046, SAE J1349, SAE J1228
77°F (25°C) and 29.31 in. Hg. (99kPa) Barometer (Dry)

For a complete listing of standard and optional equipment,
consult your authorized Detroit Diesel Corporation representative.

